

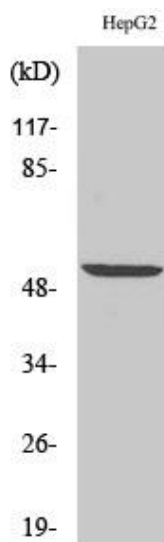


# PRPH Polyclonal Antibody

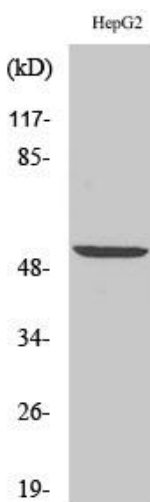
<b>Catalog No</b>	YP-Ab-03174
<b>Isotype</b>	IgG
<b>Reactivity</b>	Human;Rat
<b>Applications</b>	WB;IHC;IF;ELISA
<b>Gene Name</b>	PRPH
<b>Protein Name</b>	Peripherin
<b>Immunogen</b>	The antiserum was produced against synthesized peptide derived from human Peripherin. AA range:421-470
<b>Specificity</b>	PRPH Polyclonal Antibody detects endogenous levels of PRPH protein.
<b>Formulation</b>	Liquid in PBS containing 50% glycerol, 0.5% BSA and 0.02% sodium azide.
<b>Source</b>	Polyclonal, Rabbit,IgG
<b>Purification</b>	The antibody was affinity-purified from rabbit antiserum by affinity-chromatography using epitope-specific immunogen.
<b>Dilution</b>	WB: 1/500 - 1/2000. IHC: 1/100 - 1/300. ELISA: 1/20000.. IF 1:50-200
<b>Concentration</b>	1 mg/ml
<b>Purity</b>	≥90%
<b>Storage Stability</b>	-20°C/1 year
<b>Synonyms</b>	PRPH; NEF4; PRPH1; Peripherin; Neurofilament 4
<b>Observed Band</b>	55kD
<b>Cell Pathway</b>	Cytoplasm, cytoskeleton . Cell projection, axon . Perikaryon .
<b>Tissue Specificity</b>	Expressed in the neurons of the outer hair cells in the organ of Corti and to a lesser extent in type I spiral ganglion cells.
<b>Function</b>	function:Class-III neuronal intermediate filament protein.,online information:Peripherin entry,similarity:Belongs to the intermediate filament family.,
<b>Background</b>	This gene encodes a cytoskeletal protein found in neurons of the peripheral nervous system. The encoded protein is a type III intermediate filament protein with homology to other cytoskeletal proteins such as desmin, and is a different protein that the peripherin found in photoreceptors. Mutations in this gene have been associated with susceptibility to amyotrophic lateral sclerosis. [provided by RefSeq, Jul 2008],
<b>matters needing attention</b>	Avoid repeated freezing and thawing!

**Usage suggestions**

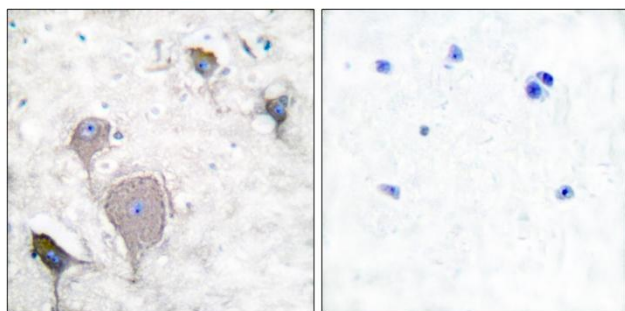
This product can be used in immunological reaction related experiments. For more information, please consult technical personnel.

**Products Images**

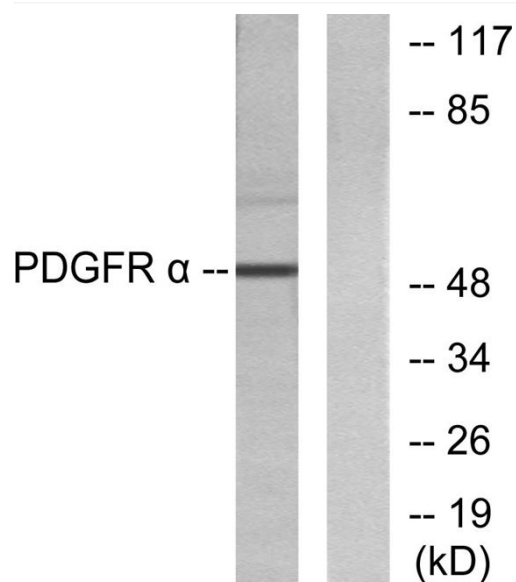
Western Blot analysis of various cells using PRPH Polyclonal Antibody diluted at 1:1000



Western Blot analysis of HepG2 cells using PRPH Polyclonal Antibody diluted at 1:1000



Immunohistochemistry analysis of paraffin-embedded human brain tissue, using Peripherin Antibody. The picture on the right is blocked with the synthesized peptide.



Western blot analysis of lysates from HepG2 cells, using Peripherin Antibody. The lane on the right is blocked with the synthesized peptide.